

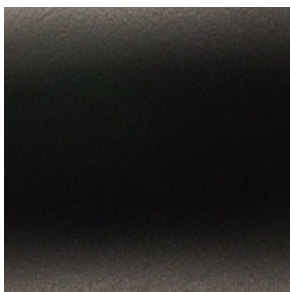
No.1700 Metal Door System



*Color may vary from the images shown

No.1700 Bi-parting, Metal, Door Systems are modeled after the tin-clad fire door systems that were prevalent in the first half of the 20th century. Leveraging more than 120 years of heritage, our products have been re-engineered to be user-friendly while preserving their original aesthetic appeal. Although these door systems are no longer used to prevent the spread of fire, they make a stunning architectural centerpiece. The handcrafted Durand's metal doors are mounted on an Allith inclined track system with our No.3 cast-iron door hangers, integrated with a weighted chain and pulley system. The weight is precisely calibrated to provide the necessary force to prevent the door from rolling closed on its own. Each door operates independently, allowing for one door to open and close without re-positioning the other door. Architects and designers are increasingly drawn to these industrial doors, as their aesthetics infuse a sense of antiquity into interior designs, creating a timeless atmosphere. These Non-Fire Rated systems are sold as complete units, including the door and all necessary hardware, with the exception of mounting bolts, which must be purchased separately.

Finishes



Satin Black Powdercoat

Learn More

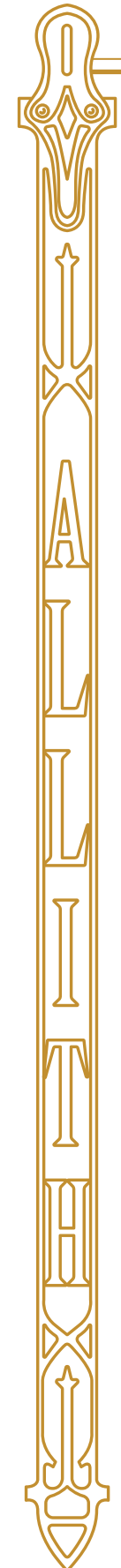


General Sales & Inquires

Industrial Brands
sales@industrialbrands.com
 602.767.4455

Hospitality Sales

Source Direct Imports
sales@sourcedirectimports.com
 602.956.1149



No.1700 Metal Door System

Our No.1700 Bi-parting Fire Door Style Systems can be complex to install, so we recommend using a professional garage door installation company for the best results. All systems are specifically designed to fit the listed opening, eliminating the need for the installation technician to cut them to length. Optional parts and accessories that coordinate with our No.1700 Metal Door Systems are available for purchase separately.

Parts and Assemblies

No.1700 Series Allith sliding door track system corresponding to the sizes below.
Durand's metal clad door with sloped top corresponding to the sizes below.
Mounting hardware kits are based on the wall thickness and are sold separately.

<u>item#</u>	<u>Size</u>
416-10-510	Series 1764 Allith track system with Durand's metal-clad door for 64" w x 84" h opening, non-handed
416-10-520	Series 1772 Allith track system with Durand's metal-clad door for 72" w x 84" h opening
416-10-530	Series 1780 Allith track system with Durand's metal-clad door for 80" w x 84" h opening, left hand
416-10-540	Series 1788 Allith track system with Durand's metal-clad door for 88" w x 84" h opening, right hand
416-10-550	Series 1796 Allith track system with Durand's metal-clad door for 96" w x 84" h opening, left hand
416-10-560	Series 1704 Allith track system with Durand's metal-clad door for 104" w x 84" h opening, right hand
416-10-570	Series 1712 Allith track system with Durand's metal-clad door for 112" w x 84" h opening, left hand
416-10-580	Series 1720 Allith track system with Durand's metal-clad door for 120" w x 84" h opening, right hand
CUSTOM	Any customization is subject to additional engineering and manufacturing fees.

Optional Accessories

<u>Item#</u>	<u>Color</u>	<u>Description</u>
316-80-230		Fastener set for Series 1700/1800 systems with 64" to 120" door opening and 6-1/2" to 7" wall
316-80-240		Fastener set for Series 1700/1800 systems with 64" to 120" door opening and 8-1/2" to 9" wall
316-80-250		Fastener set for Series 1700/1800 systems with 64" to 120" door opening and 11-1/2" to 12" wall

