

# No.218 Track System

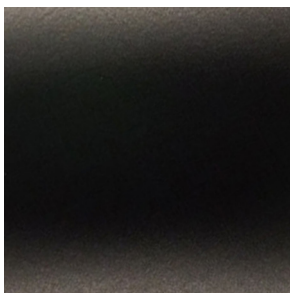


\*Door panel is for reference only and is not included. Color may vary from the images shown

Leveraging more than 120 years of heritage, our No.218 sliding door track systems have been re-engineered for the 21st-century consumer to assure authentic and lasting architectural significance. These commercial quality hardware systems are available in two standard lengths and can accommodate 1-3/8" to 1-3/4" thick doors weighing up to 250 lbs when installed properly. Each system is individually packaged and includes a 1-1/4" diameter track assembly with mounting brackets, No.18 cast iron door hangers, soft-stop system, blade style floor guide and installation hardware.

| <u>item#</u> | <u>Size</u> | <u>Color</u> | <u>Application Description</u>                      |
|--------------|-------------|--------------|---|
| 312-10-570   | 78" track   | Satin Black  | Designed for finished openings from 32" to 36" wide |
| 312-10-630   | 84" track   | Satin Black  | Designed for finished openings from 36" to 42" wide |
| 312-11-570*  | 78" track   | Satin Brass  | Designed for finished openings from 32" to 36" wide |
| 312-11-630*  | 84" track   | Satin Brass  | Designed for finished openings from 36" to 42" wide |

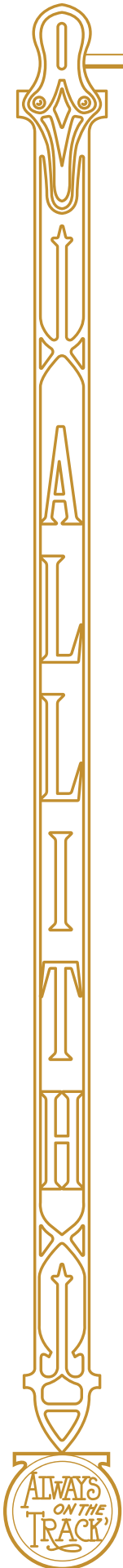
Satin Black Powdercoat



Satin Brass Powdercoat



\*Satin Brass color is only available for bulk orders exceeding 100 sets.



# No.218 Track System

Our standard systems require minimal assembly and are simple to install. For applications where a custom length is required the tracks can easily be cut to the desired length by the installation technician. Optional parts and accessories which coordinate with our No.218 sliding door track systems can be purchased separately.

## Included Parts and Assemblies

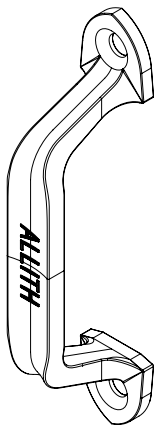
No.2 Sliding track assembly compatible with 1-1/4" track, cast iron 1-5/8" offset mounting brackets and installation hardware.

No.18 Cast Iron Door hangers for No.2 track

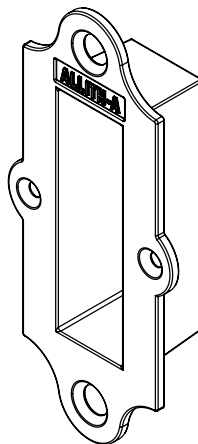
No.50 Door guide with center blade for doors less than 250 lbs  
Installation hardware

## Optional Accessories

| Item#      | Color       | Description   |
|------------|-------------|---|
| 380-30-121 | Satin Black | No.305 Raised Door Pull                               |
| 380-31-121 | Satin Brass | No.305 Raised Door Pull, Min. order quantity 100 pcs. |
| 380-30-221 | Satin Black | No.306 Flush door pull                                |
| 380-31-221 | Satin Brass | No.306 Flush door pull, Min. order quantity 100 pcs.  |



380-30-121  
380-31-121



380-30-221  
380-31-221



### General Sales & Inquires

Industrial Brands  
sales@industrialbrands.com  
602.767.4455

### Hospitality Sales

Source Direct Imports  
sales@sourcedirectimports.com  
602.956.1149



REV.2024.11.07

An Industrial Brands Company  
www.industrialbrands.com

