

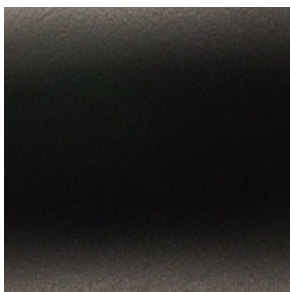
# No.800 Metal Door System



\*Color may vary from the images shown

No.800 Metal Door Systems are modeled after the tin-clad fire door systems that were prevalent in the first half of the 20th century. Leveraging more than 120 years of heritage, our products have been reengineered to be user-friendly while preserving their original aesthetic appeal. Although these door systems are no longer used to prevent the spread of fire, they make a stunning architectural centerpiece. The handcrafted Durand's metal doors are mounted on an Allith track system with our No.3 cast-iron door hangers and integrated with a two sets of weighted chain and pulley systems. The weight is precisely calibrated to provide the necessary force to prevent the door from rolling closed on its own. Architects and designers are increasingly drawn to these industrial doors, as their aesthetics infuse a sense of antiquity into interior designs, creating a timeless atmosphere. These Non-Fire Rated systems are sold as complete units, including the door and all necessary hardware, with the exception of mounting bolts, which must be purchased separately.

## Finishes



Satin Black Powdercoat

## Learn More

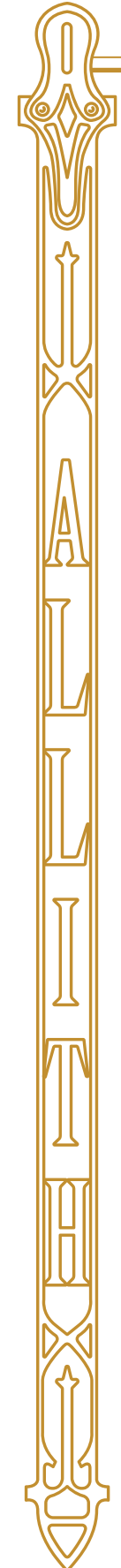


## General Sales & Inquires

Industrial Brands  
[sales@industrialbrands.com](mailto:sales@industrialbrands.com)  
 602.767.4455

## Hospitality Sales

Source Direct Imports  
[sales@sourcedirectimports.com](mailto:sales@sourcedirectimports.com)  
 602.956.1149



# No.800 Metal Door System

Our No.800 Fire Door Style Systems can be complex to install, so we recommend using a professional garage door installation company for the best results. All systems are specifically designed to fit the listed opening, eliminating the need for the installation technician to cut them to length. Optional parts and accessories that coordinate with our No.800 Metal Door Systems are available for purchase separately.

## Parts and Assemblies

No.800 Series Allith sliding door track system corresponding to the sizes below.

Durand's metal clad door with corresponding to the sizes below.

Mounting hardware kits are based on the wall thickness and and are sold separately.

<u>item#</u>	<u>Size</u>
416-12-130	Series 828 Allith track system with Durand's metal-clad door for 28" w x 84" h opening, left hand
416-12-132	Series 828 Allith track system with Durand's metal-clad door for 28" w x 84" h opening, right hand
416-12-150	Series 832 Allith track system with Durand's metal-clad door for 32" w x 84" h opening, left hand
416-12-152	Series 832 Allith track system with Durand's metal-clad door for 32" w x 84" h opening, right hand
416-12-170	Series 836 Allith track system with Durand's metal-clad door for 36" w x 84" h opening, left hand
416-12-172	Series 836 Allith track system with Durand's metal-clad door for 36" w x 84" h opening, right hand
416-12-190	Series 840 Allith track system with Durand's metal-clad door for 40" w x 84" h opening, left hand
416-12-192	Series 840 Allith track system with Durand's metal-clad door for 40" w x 84" h opening, right hand
416-12-210	Series 844 Allith track system with Durand's metal-clad door for 44" w x 84" h opening, left hand
416-12-212	Series 844 Allith track system with Durand's metal-clad door for 44" w x 84" h opening, right hand
416-12-230	Series 848 Allith track system with Durand's metal-clad door for 48" w x 84" h opening, left hand
416-12-232	Series 848 Allith track system with Durand's metal-clad door for 48" w x 84" h opening, right hand
416-12-250	Series 852 Allith track system with Durand's metal-clad door for 52" w x 84" h opening, left hand
416-12-252	Series 852 Allith track system with Durand's metal-clad door for 52" w x 84" h opening, right hand
416-12-270	Series 856 Allith track system with Durand's metal-clad door for 56" w x 84" h opening, left hand
416-12-272	Series 856 Allith track system with Durand's metal-clad door for 56" w x 84" h opening, right hand
416-12-290	Series 860 Allith track system with Durand's metal-clad door for 60" w x 84" h opening, left hand
416-12-292	Series 860 Allith track system with Durand's metal-clad door for 60" w x 84" h opening, right hand
416-12-310	Series 864 Allith track system with Durand's metal-clad door for 64" w x 84" h opening, left hand
416-12-312	Series 864 Allith track system with Durand's metal-clad door for 64" w x 84" h opening, right hand
CUSTOM	Any customization is subject to additional engineering and manufacturing fees.

## Optional Accessories

<u>Item#</u>	<u>Color</u>	<u>Description</u>
316-80-130		Fastener set for Series 700/800 systems with 28" to 64" door opening and 6-1/2" to 7" wall
316-80-140		Fastener set for Series 700/800 systems with 28" to 64" door opening and 8-1/2" to 9" wall
316-80-150		Fastener set for Series 700/800 systems with 28" to 64" door opening and 11-1/2" to 12" wall

